

TX 12/35

THE RAISING POWER



MX – TX

The TX series stackers are characterized by manual traction and electrohydraulic lifting technology. These stackers are very steady and are suitable for lifting very heavy loads safely. Version 12 (1.2 t) includes polyurethane wheels as standard to reduce resistance and effort required even with full load capacity.

START KEY AND BATTERY CUT-OFF (ISOLATOR) SWITCH

The start key on the TX stacker performs a double function:

- switches the stacker on/off;
- is an emergency control, i.e. it completely stops battery power supply and thus prevents the lifting of forks.



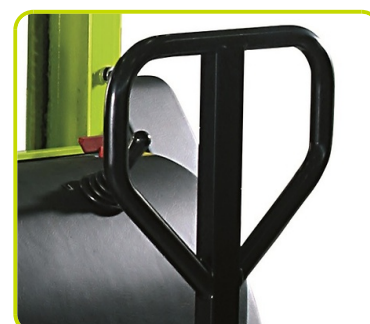
FOOT BRAKE

The foot brake, which is available on the MX and TX machines, performs the parking brake function.



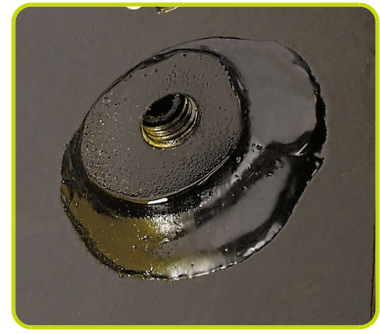
TILLER

- The plastic cover increases the ergonomic character of the handle thus rendering the raising and transport operations even "lighter".
- The 3-position control lever (down, neutral, up) is positioned on the steering wheel to foster manoeuvrability.



ADJUSTABLE BUFFERS

The TX 12 version is equipped with adjustable buffers that minimize possible oscillation during lifting.



Description

1.1 Fabricante			LIFTER
1.3 Grupo tracción			Manual
1.4 Conducción			Acompañante
1.5 Capacidad carga	Q	Kg	1200
1.6 Centro gravedad	c	mm	600
1.8 Distancia de la carga	x	mm	780
1.9 Distancia entre ejes	y	mm	1155

Weights

2.1 Peso con batería		Kg	474
2.2 Carga sobre ejes con carga, atras		Kg	1137
2.2 Carga sobre ejes con carga, delante		Kg	537
2.3 Carga sobre ejes sin carga, delante		Kg	345
2.3 Carga sobre ejes sin carga, atras		Kg	129

Tyres/Chassis

3.1 Tyres: stabilizers wheels - front			POLY.C.
3.1 Ruedas traseras			NYLON
3.3 Dimensiones ruedas traseras - Diametro		mm	82
3.3 Dimensiones ruedas traseras - Ancha		mm	70
3.4 Dimensiones Ruedas Laterales (Ø)		mm	200
3.4 Dimensiones Ruedas Laterales (ancho)		mm	50
3.5 Dimensiones ruedas traseras - Q.ty (X=motriz)		nr	2
3.6 Vía delantera	b10	mm	720
3.7 Vía trasera	b11	mm	410

Dimensions

4.2 Height, mast lowered	h1	mm	2250
4.3 Elevacion Libre	h2	mm	80
4.4 Elevación	h3	mm	3410
4.5 Height, mast extended	h4	mm	3915
4.9 Altura del timón max	h14	mm	1080
4.15 Altura horquillas bajadas	h13	mm	90
4.19 Longitud total	l1	mm	1850
4.20 Longitud de timón a horquillas	l2	mm	700
4.21 Ancho total	b1	mm	850
4.22 Dimensiones horquillas	s	mm	70
4.22 Dimensiones horquillas	e	mm	150
4.22 Dimensiones horquillas	l	mm	1150
4.24 Fork carriage width	b3	mm	650
4.25 Ancho horquillas	b5	mm	560
4.32 Altura libre inferior, con carga, al centro entre ejes	m2	mm	20
4.34 Pasillo de trabajo para palet 800x1200 longit.	Ast	mm	2540
4.35 Radio de giro	Wa	mm	1760

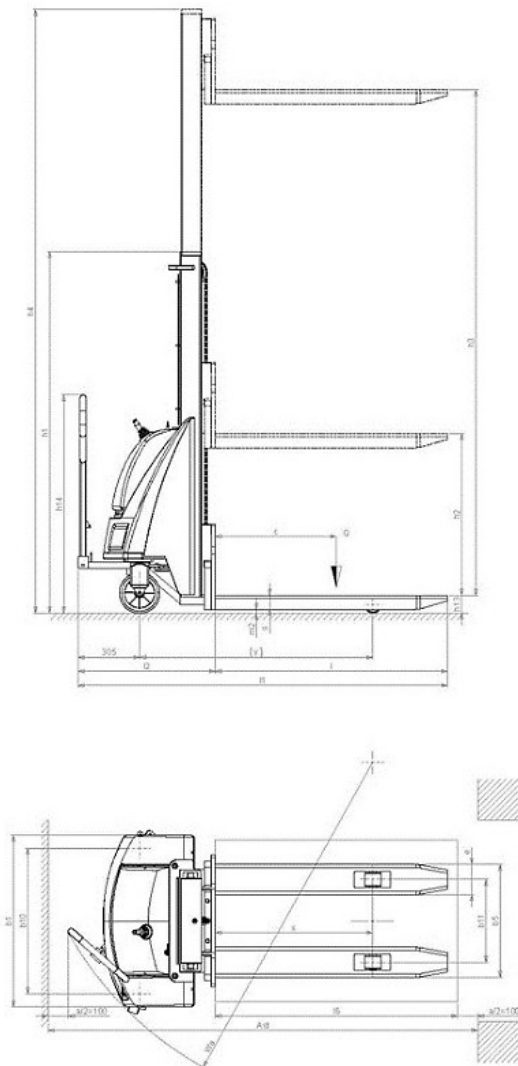
Performances

5.2 Velocidad de elevación con carga	m/s	0.09
5.2 Velocidad de elevación sin carga	m/s	0.12
5.3 Lowering speed laden	m/s	0.4
5.3 Lowering speed unladen	m/s	0.1

Electric motors

6.2 Lift motor power	kW	2.2
6.4 Battery voltage	V	24
6.4 Battery capacity, Min	Ah	74
6.4 Battery capacity, Max	Ah	74
6.5 Battery weight, Min	Kg	36
6.5 Battery weight, Max	Kg	36
8.4 Sound level at driver's ear	dB(A)	67

Battery and battery charger integrated



The information is aligned with the Data file at the time of download. Printed on 14/08/2018 (ID 641)

©2018 | PR INDUSTRIAL s.r.l. | All rights reserved | Image shown may not reflect actual package. Specifications subject to change without notice

